



Commercial display controller

M80 Product Specifications

Statement

Dear user friend, thanks for choosing Shanghai Xixun Electronic Technology Co., Ltd. (hereinafter referred to as Xixun Technology) as your LED advertising equipment control system. The main purpose of this document is to help you quickly understand and use the product. We strive to be precise and reliable when writing the document, and the content may be modified or changed at any time without notice.

Copyright

The copyright of this document belongs to Xixun Technology. Without the written permission of our company, no unit or individual may copy or extract the content of this article in any form.

Trademark



is a registered trademark of Xixun Technology.

Update Record

NO.	Version	Details	Date
1	Ver.1.0	Initial publish	2020.04.23
2	Ver.1.1	Content change	2021.07.16
3	Ver.1.2	Content change	2021.08.31

Shanghai Xixun Electronics Co., Ltd.

Product Overview

M80 internet player adopts 8 core high performance CPU, also integrated with sending card together, which features powerful video process ability and reasonable costs.

Small size, low power consumption, fits for wide temperature range and easy to install, M80 has 4 Ethernet output ports, maximum 2.3 million pixels, widest reach to 3,840pixels, highest reach to 2,160 pixels.

It can be widely used in commercial locations including fixed ads sign, smart led lamp post sign, door head sign, LED vehicle signs, chain stores ads sign, LED electronic whiteboard, led mirror sign, led glass sign, LED advertisement sign and etc.

Product features:

1. Android7.1syetem;
2. Support all types of smart phone, Ipad, PC to remote control;
3. Support WIFI internet and can also be setup as portable wifi hotspot;
4. Low power consumption while reliable performance, fits for wide temperature range;
5. Small size, easy to install.

Functions

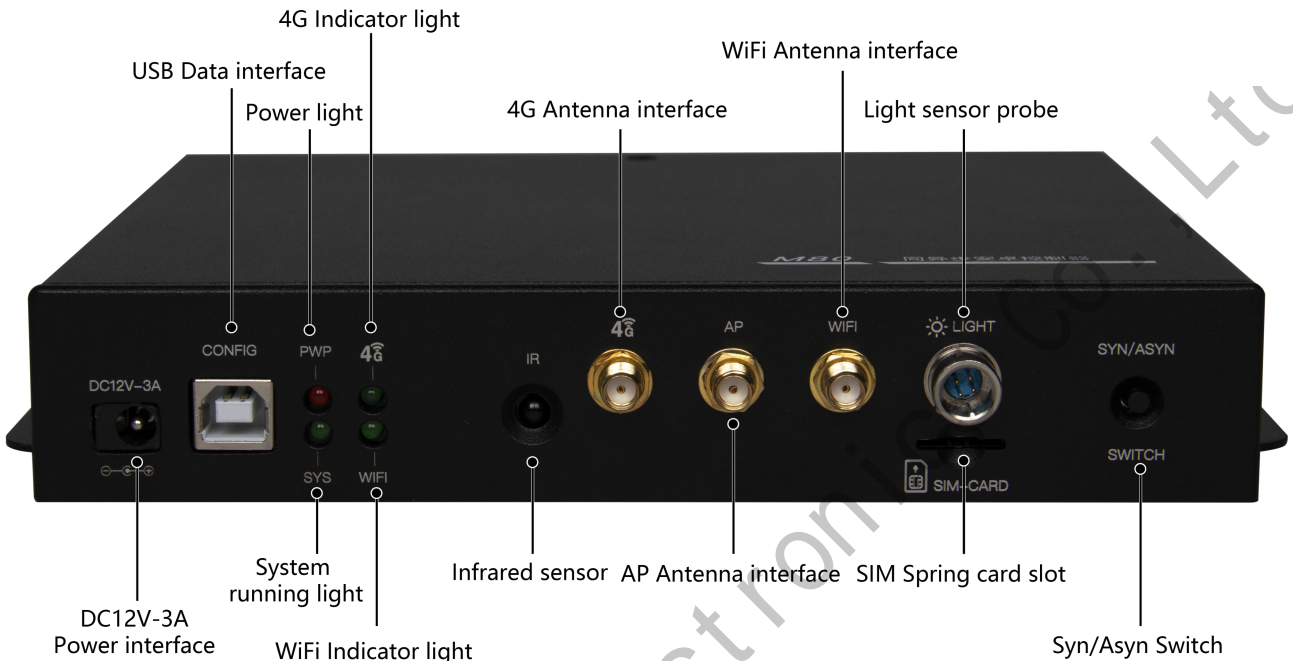
1. Support to switch asynchronous or synchronous remotely;
2. Support HDMI input and HDMI Loop out;
3. Support H.265 high quality hardware decoding;
4. Support AIPS cloud platform remotely control, no need go to sites;
5. Support LAN/WFI/4G communication types;
6. Support high quality video, images, texts, weather forecast and clock programs;
7. Support display in multiple windows, design window size and position freely, support windows overlay display;
8. Provide ANDROID/IOS system APP;
9. Support all types of smart phone, IPad, PC to remote control;
10. Support measure environmental parameters like temperature, humidity and brightness, etc via RS485 interface, ;
11. Support auto brightness;
12. Support NTP adjust time;
13. Support multiple screens display in the same frame;
14. Support update program via USB, plug in and display; also support send new program through platform;
15. Support auto brightness and brightness schedule;
16. Support display according to program list;
17. Support turn on/ off screen via platform.

Product Appearance



Shanghai Xixun Electronics Ltd

Interfaces Description



M80 front interfaces

Front side	
Interfaces name	Interfaces function
DC 12V	Power port: 5.5*2.5MM
CONF IG	B type USB port, for config led screen parameters
PER	Power light, keep solid on when power on
4G	4G indicator, keep solid on when 4G internet works
SYS	System indicator, will flashing when running
WiFi	WiFi indicator, keep solid on when wifi internet works
IR	Infrared probe
4G	4G antenna port (optional)

WiFi	WiFi antenna port
SIM	Micro SIM card
SENSOR	Brightness probe port
SWITCH	Switcher of asynchronous and synchronous mode



M80 back side interfaces

Back side	
Name	Functions
ETHERNET	100MB Ethernet port
USB	USB2.0*2, can be used for USB storage or other devices
HDMI IN	HDMI input
HDMI OUT	HDMI output
AUDIO	1/8" (3.5mm)TRS port for audio output
RESET	Test button
LEDOUT	4 Gigabite Ethernet output port

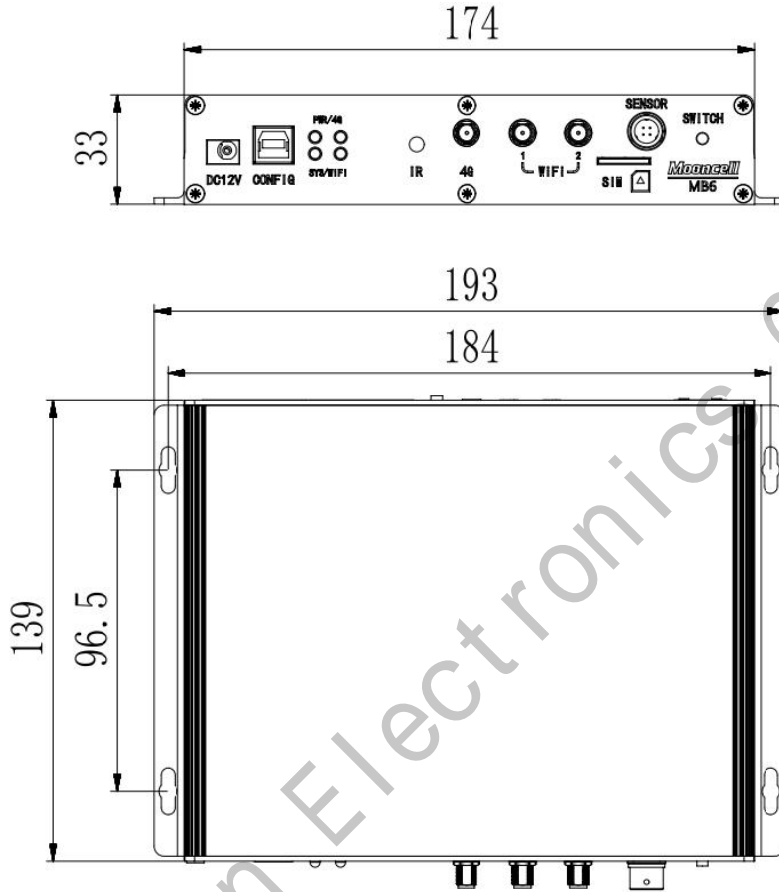
Product Parameters

	Descriptions
Mode	M80
Resolutions	Maximum 2.3 million, widest 3,840 and highest 2,160 pixels
Communicate type	100MB LAN、WiFi (AP/STATION) 、4G modem
RAM	2G DDR3 high speed RAM
ROM	8G EMMC high speed ROM
CPU	8 core
Operation system	Android 7.1
Receiver	D80、D9 series receiver
Software	LedOK Express、AIPS (www.ledaips.com)

Technical Parameters

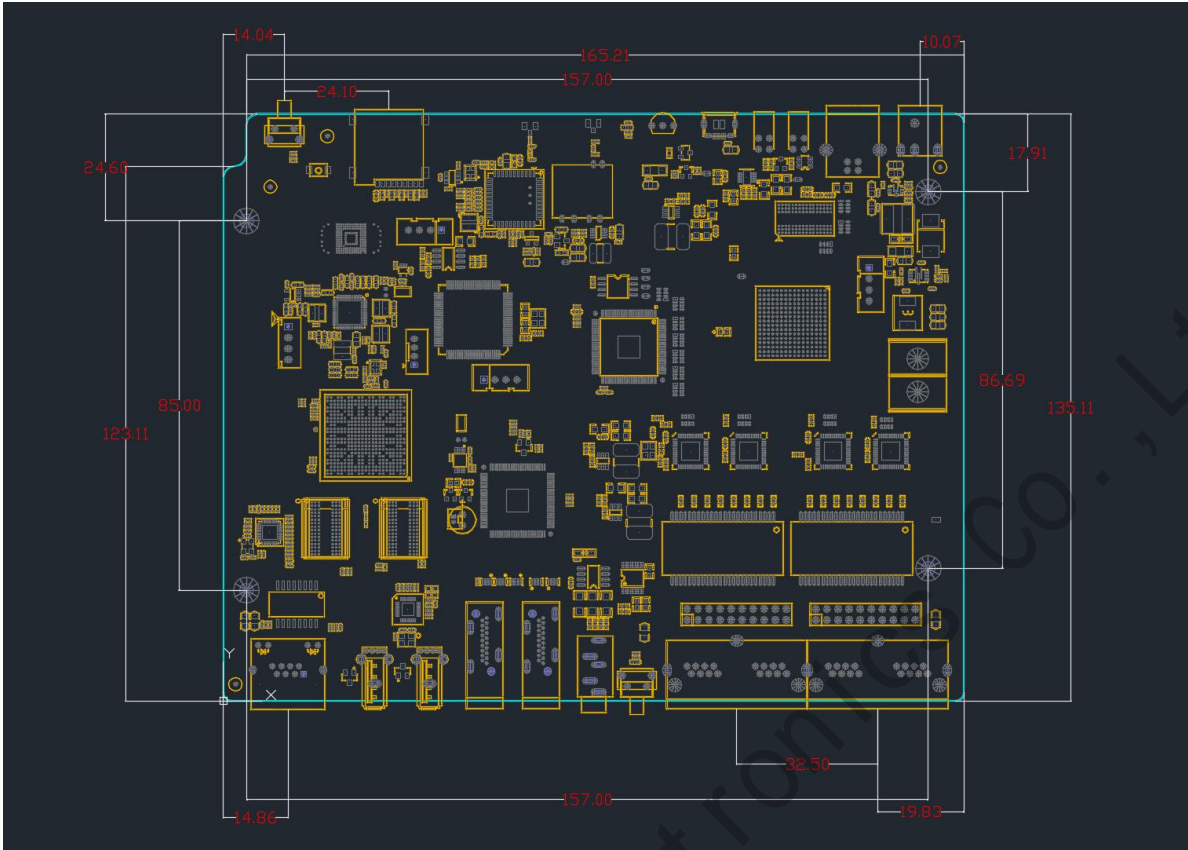
Electronical parameters	Power input	12V
	Rated power	15W
Working	Working temperature range	-20°C~+65°C
	Working humidity range	10%RH-90%RHno solidification
Dimension	193mmX139mmX33mm	
Net weight	1Kg	
Package information	Standard package list	USB debug cable、 Wi-Fi antenna (2) 、 12V3A power port with line (5.5mm × 2.5mm standard port)
	Optional list	4G modem 、 4G antenna

Dimension



M80B With box size

Unit: mm



M80 bare card size drawing

Unit: mm

Shanghai Xixun Electronics Co., Ltd.

Notes

1. Please let professional guys to install.
2. Must keep prevention of static electricity.
3. Must water-proof and dust elimination.



Shanghai Xixun Electronics Co., Ltd